

Brush Love




Adobe MAX 2020

Brush Lettering with Debi Sementelli & Laura Worthington

DEBI SEMENTELLI

DebiSementelli.com




hello@DebiSementelli.com

 SementelliDebi
 @LetterheadGirl
 DebiSementelli

LAURA WORTHINGTON

LauraWorthingtonDesign.com

hello@LauraWorthingtonDesign.com

 LauraWorthingtonFonts
 @L_Worthington
 lwfonts

RESOURCES lauraworthingtondesign.com/news/article/max2020

Where to add Flourishes

- Add flourishes to the entrance and exit points of a letter
- Sketch/Letter the entire word first, then add flourishes
- Flourishes may be added to ascenders, descenders, cross-bar, ending & beginning points

Tips of lettering Flourishes

- Practice! Go over the flourish several times with a pencil to commit to memory then try it with a brush
- Use as many pulling strokes as possible- turning your paper to the side to work with the horizontal strokes
- Stopping and starting points- near the horizontal and vertical axes, you may find that clockwise strokes are easier to make

The Parts of Flourishes

arc of straight strokes



curved strokes



ogee or 's'shaped curves



loops



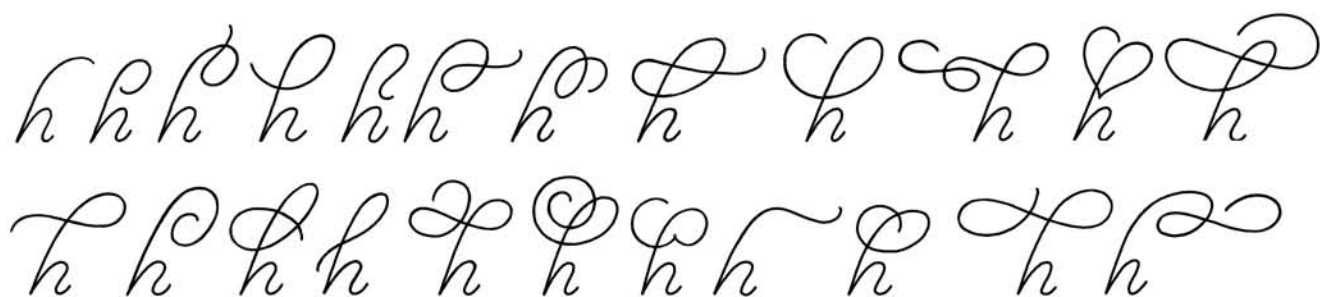
spiral



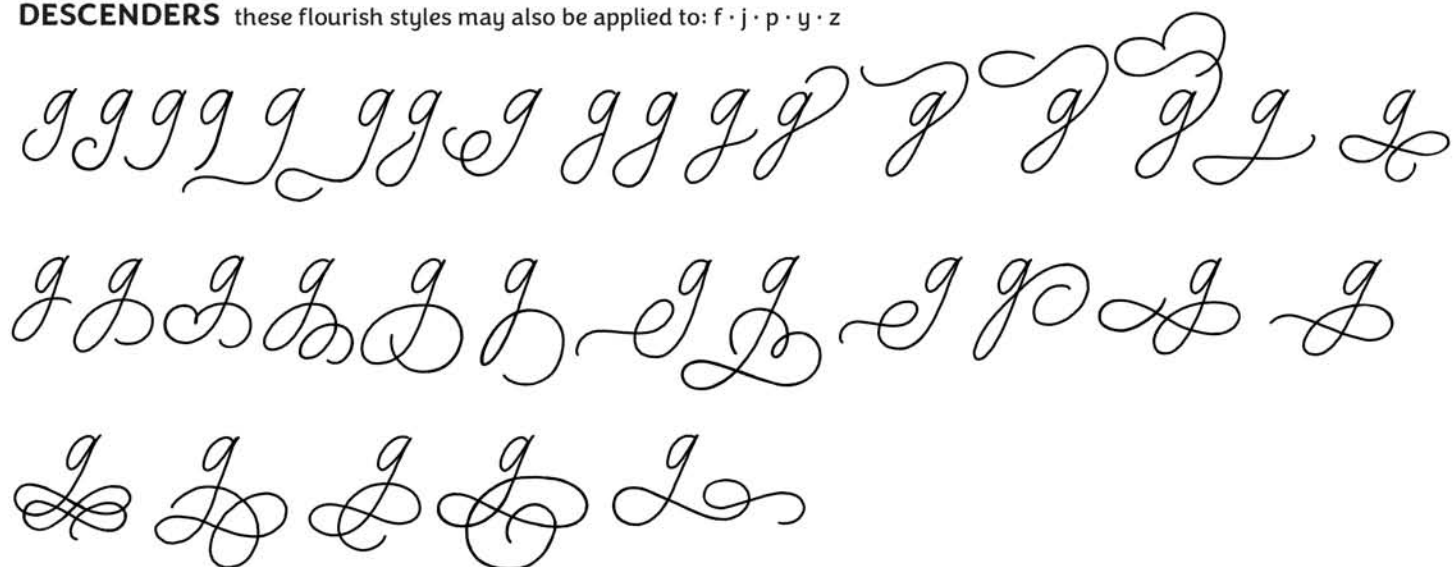
reverse direction



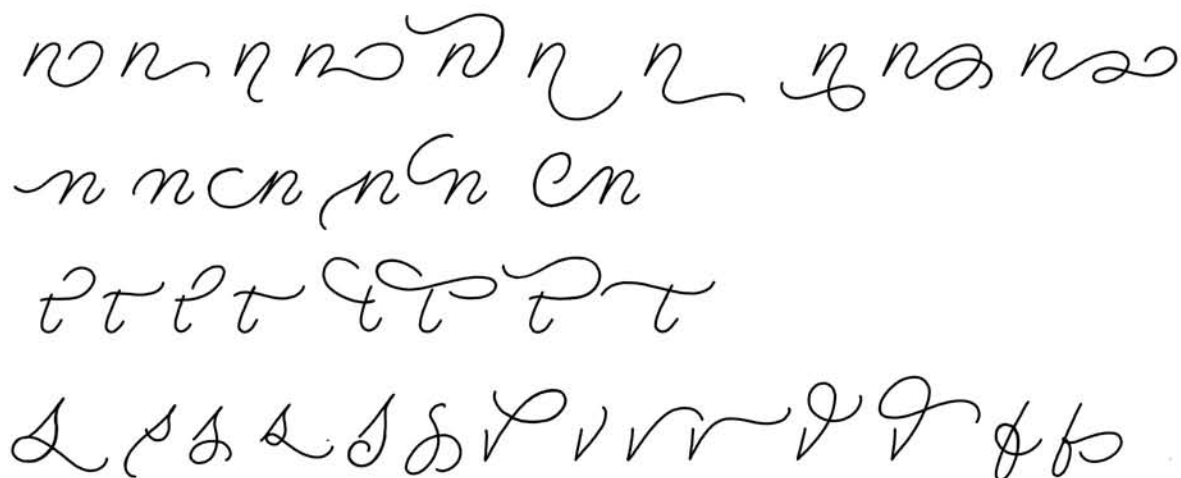
ASCENDERS these flourish styles may also be applied to: b · d · f · k · l



DESCENDERS these flourish styles may also be applied to: f · j · p · y · z



MISCELLANEOUS FLOURISHES



NUMERALS



A A A A A A A

A A A A A A A A A A A A A
A A A A A A A A A A A

B B B B B B B B B B B B B B B
B B B B B B B B

C C C C C C C C C C C

D D D D D D D D D D D D D D D
D D D D D D D D D D D D

E E E E E E E

E E E E E E E E E E E E

F F F F F F F

F F F F F F F F F F F

G G G G G G G G G G G G G G G G
G G G G G G G G G G

H H H H H H H H H H H H H H H H
H H H H H H H H H H H H H H H

I I I I I I I I I I I I I I I I

J J J J J J J J J J J J J J J J

K K K K K K K K K K

L L L L L L L L L L L L L L L L

M M M M M M M M M M
m m m m m m m m m m

N N N N N N N N N N N N N N N N

O O O O O O O O O O O

P P P P P P P P P P P

Q Q Q Q Q Q Q Q Q Q

R R R R R R R R R R R

S S S S S S S S S S

T T T T T T T T

U U U U U U

V V V V V V V V

W W W W W W W W W W

X X X X X

Y Y Y Y Y Y

Z Z Z Z Z Z Z Z Z Z

Play with Ligatures: Try creating both traditional (tt, th, ll, bb, etc..) and non-traditional (Caps with lower case) letter combinations that connect in a way that brings more fluidity to the word. Use some of the examples below or create your own.

Caps connecting to lower case.

Creating an upward slant adds diversity and is more pleasing to the eye.



extreme slant Upright
NARROW WIDE
STYLE OPTIONS TO TRY

generosity BASIC TEXT
Excited
PUTTING FEELING INTO
THE WORDS

Magnificent
Soft soft
Generous
Excellent
Marvelous

THE PENCIL SKELETON

The pencil skeleton is an excellent approach to composing a hand lettered piece –you can see how the letters in a word may interact with each other, experiment with swashes, letter styles and decorative elements and how all of the components of your composition fit together within the framework of a larger composition. It offers a step in between that of a thumbnail and a more tightly refined first draft.

The pencil skeleton may also establish a foundation or guide for which to layer more complex lettering over the top of, with a brush, pointed pen or other lettering tool. Lettering with a brush, for example, can be daunting as there is much to consider: letter styles, composition, the skill require to handle and manipulate the brush, and more. By starting with a pencil skeleton, you've already made the decisions about composition, letter style, etc. and can move on to lettering on top of the skeleton, focusing on that skill alone.

pencil skeleton

Pack my
box with
five dozen
liquor jugs

lettering over the pencil skeleton

Pack my
box with
five dozen
liquor jugs

Pack my
box with
five dozen
liquor jugs



Composition Tips

- Research and compile reference images
- Determine hierarchy
- Create a color palette to work with
- Sketch thumbnails
- Try working within a container, shape or frame
- Explore how the letters interact with each other
- Pair contrasting lettering styles
- Go with a theme
- Consider the flow of the design & its cohesiveness
- Choose a focal point
- Go beyond letters: design complementary illustrations or icons
- Create thumbnails with pencil and/or brush
- Sketch a pencil skeleton as a starting point
- Letter multiple renditions to experiment with variations of letterforms and composition
- Combine the best lettering elements together into one piece
- Refine lettering by tracing over lettering with brush, pen or pencil
- Finalize: scan and refine in Photoshop, draw vector outlines, redraw using a lightbox

TIPS ON HOW TO

Assess Your Lettering

STYLE

Do all of the letters look like they belong together?

Does the style work for the message you want to convey?

CONSISTENCY & PROPORTION

Are the thicks/thins consistent throughout and in the right places?

How about the widths of the letters? Spacing between the letters?